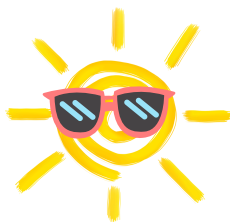




## JUNE...

The month of leaves  
and roses,  
When pleasant sights  
salute the eyes,  
And pleasant scents  
the noses.  
—N. P. Willis (1807-67)

THE FIRST DAY  
OF SUMMER  
IS JUNE 20!



FATHER'S DAY  
PORTRAITS ON  
WEDNESDAY, JUNE 11TH

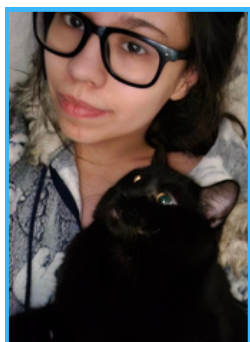


IT'S ALZHEIMER'S AND BRAIN AWARENESS MONTH! LETS CHALLENGE YOUR NOGGIN!

1. What is special about these words: job, polish, herb?
2. A doctor and a bus driver are both in love with the same woman. The bus driver had to go on a long bus trip that would last a week. Before he left, he gave the woman seven apples. Why?

[Answers on last page](#)

...GET TO KNOW JOANNA, RESIDENT ASSISTANT!



1. Joanna is a cat person
2. Her favorite hobby is to cook for her family
3. Joanna enjoys going fishing in her free time
4. She considers herself to have a goofy personality
- & 5, she loves to do arts and crafts

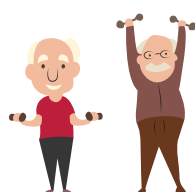
AHA  
PODIETRY  
JUNE 11



BLUESTONE DR.  
ROUNDING  
MONDAY,  
JUNE 23



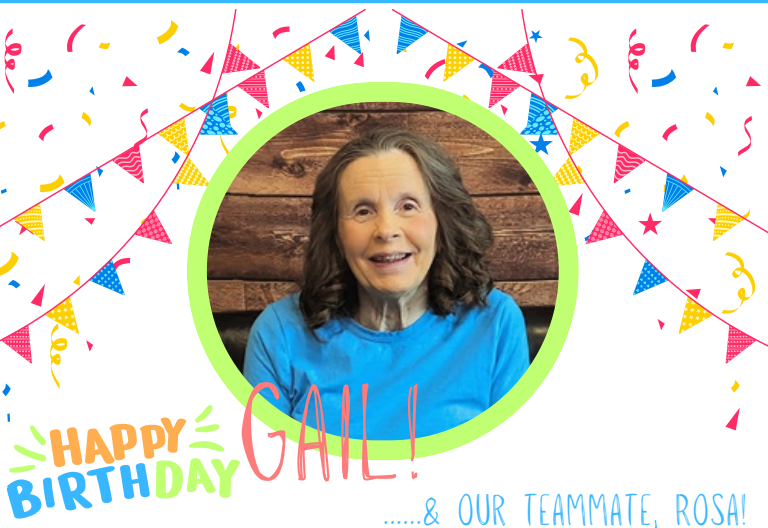
NATIONAL MEN'S HEALTH MONTH



June is Men's Health Month! This month is all about encouraging the men in your life (including you, men out there!) to take care of their bodies by eating right, exercising, and working to prevent disease. The official symbol for the month is a blue ribbon and the purpose of Men's Health Month is to heighten the awareness of preventable health problems and encourage early detection and treatment of diseases including cancer, heart disease, and depression.



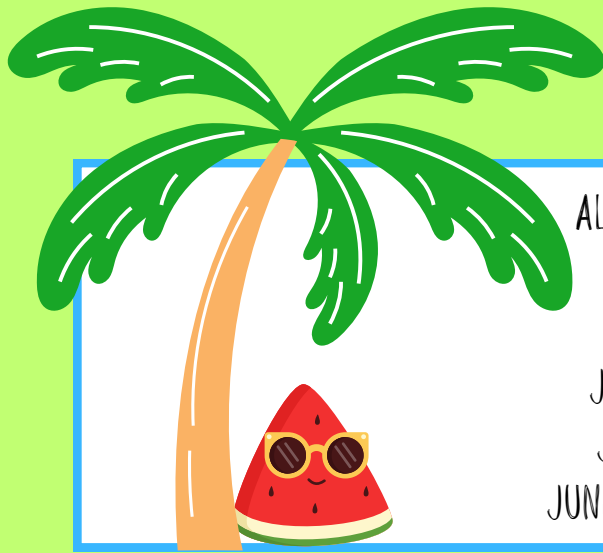
## PR's Beautiful Mothers



Flag Day is a holiday celebrated on June 14 in the United States to commemorate the adoption of the flag of the United States in 1777







## JUNE ACTIVITIES CALENDAR

ALSO CELEBRATED IN JUNE...

JUNE 6<sup>TH</sup> IS D-DAY

JUNE 14<sup>TH</sup> IS FLAG DAY

JUN 16<sup>TH</sup> IS FATHER'S DAY

JUNE 19<sup>TH</sup> IS JUNETEENTH

JUNE 20<sup>TH</sup> IS SUMMER SOLSTICE



### Brain teaser answers:

1. They are pronounced differently when the first letter is capitalized
2. An apple a day keeps the doctor away!

SUNDAY	MONDAY	TUESDAY	WEDNESDAY	THURSDAY	FRIDAY	SATURDAY
<b>2:00</b> Group excercise <b>After Dinner</b> games	<b>2:00</b> BINGO <b>5:45</b> Happy Hour	<b>2:00</b> Name Signs Craft <b>After Dinner</b> Big Screen Show	<b>2:00</b> BINGO <b>After Dinner</b> Tod Time	<b>2:00</b> Res. Council meeting <b>Dinner time</b> Match Game	<b>1:30</b> Big Screen Movie <b>After Dinner</b> Father's Day Coloring Poster	RESIDENT CHOICE
<b>2:00</b> Group excercise <b>After Dinner</b> games	<b>2:00</b> BINGO <b>3:45 CHURCH</b> <b>After dinner</b> BYO Sundaes	<b>2:00</b> Pinwheel Craft <b>After Dinner</b> Big Screen Show <b>LIBRARY DAY</b>	<b>2:00</b> BINGO <b>After Dinner</b> Tod Time	<b>2:00</b> 100 Years of Pickin' Band <b>Dinner time</b> Match Game	<b>11:30</b> Veterans visit <b>Father's Day Portraits</b>	RESIDENT CHOICE
<b>2:00</b> Group excercise <b>After Dinner</b> games	<b>2:00</b> BINGO <b>After dinner</b> coloring pages	<b>2:00</b> Cookie Decorating <b>After Dinner</b> Big Screen Show	<b>2:00</b> BINGO <b>After Dinner</b> Tod Time	<b>1p-3p</b> Staff Meeting no Activity <b>Dinner time</b> Match Game	<b>1:00</b> Pool Side Margaritas (v) <b>Contest:</b> Guess how many Seashells	RESIDENT CHOICE
<b>2:00</b> Group excercise <b>After Dinner</b> games	<b>2:00</b> BINGO <b>3:45 CHURCH</b> <b>After dinner</b> coloring pages	<b>2:00</b> Giant Jenga <b>After Dinner</b> Big Screen Show <b>LIBRARY DAY</b>	<b>2:00</b> BINGO <b>After Dinner</b> Tod Time	<b>2:00</b> Karaoke Sing-a-Long <b>Dinner time</b> Match Game	<b>10:30</b> Garden Club <b>After Dinner</b> Summer Coloring	RESIDENT CHOICE
<b>2:00</b> Group excercise <b>After Dinner</b> games	<b>2:00</b> BINGO <b>5:45</b> Happy Hour					